

EDINBURGH RESEARCH PARTNERSHIP in Engineering and Mathematics  
Sanderson Building, Classroom 3

User Guide

LOCAL PRESENTATION

**Power**

Turn on the "SYSTEM POWER" switch located in the centre of the presentation desk.



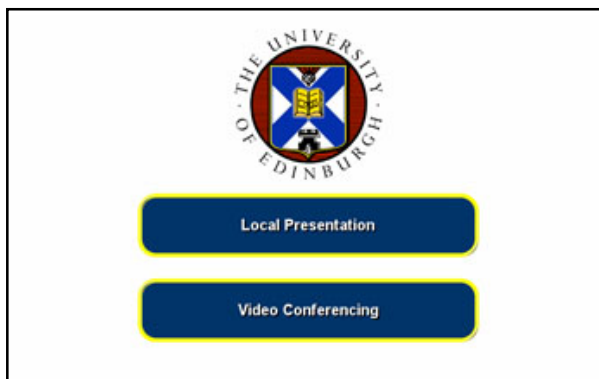
Control Desk



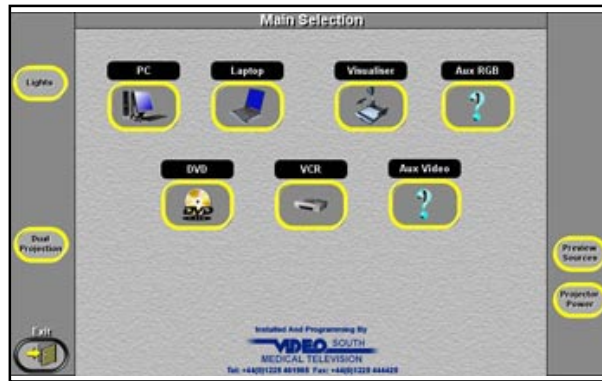
Desk Power Switch

**Presentation Control**

All audiovisual equipment is selected and controlled from the AMX touchpanel located on the presentation desk. If the touchpanel is dark it is in standby or sleep mode, touch the panel to activate. The panel should show:



If not, then select "EXIT" on the bottom left of the panel to reach this screen.



To use the seminar room system for a standard presentation select the “Local Presentation” button on the Touchpanel. You will then be presented with a selection of audiovisual presentation sources. As follows:

Presentation Sources:-

- **Laptop** Laptop Connection cable set (on desk near the AMX touch panel)
- **Visualiser** Visualiser/Document Camera
- **VCR** VHS VCR / DVD combination unit
- **DVD** VHS VCR / DVD combination unit
- **PC** Dedicated Networked PC
- **AUX RGB\*** Temporary equipment with 15pin RGB connection
- **AUX VIDEO** Temporary equipment with video / audio connection

\*AUX RGB and Video connections together with associated audio inputs are located in the centre of the Presentation Desk adjacent to the System Power switch.

The Single Screen Data Projector will automatically switch on when a source is selected and will remain on for the duration of the presentation.

When a source is selected the AMX panel display will change page and provide additional connection information or system control where required.



For example when the Video Tape is selected VCR controls (Play, Stop, etc.) are provided together with a Volume/Mute control for the VCR audio.

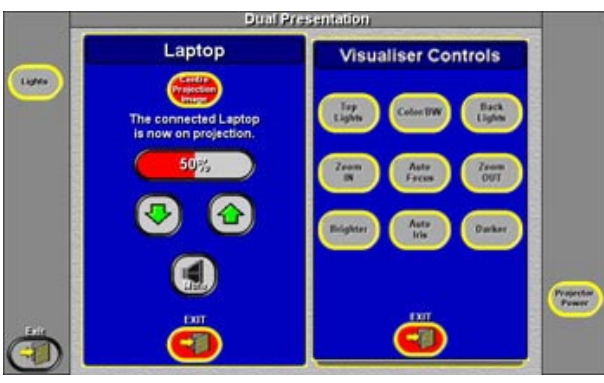
The presentation material will be displayed on the main presentation screen and on the right hand desk confidence monitor.

When the presenter is finished with a particular presentation source the “Exit” button at the bottom left of the page should be pressed, this will take the user back to the source selection page and remove the presentation material from the data projector and in this mode the desk confidence monitor .

The “Dual Projection” button on the Main Selection page allows two presentation sources to be displayed simultaneously.



NOTE: screens are named LEFT and RIGHT from the audience viewpoint the desk confidence monitors replicate the screen displays, i.e the image displayed on Screen Left is also displayed on the left hand desk confidence monitor.



For example Laptop on the main presentation screen and the Visualiser on the other.

The volume of any audio associated with a presentation is adjusted by using the “Volume” control on screen. This also applies to each source when in ‘Dual’ projection, the volume is on pop ups for each source, as shown here for ‘Laptop’ on the left

**AUDIO MUTE:**

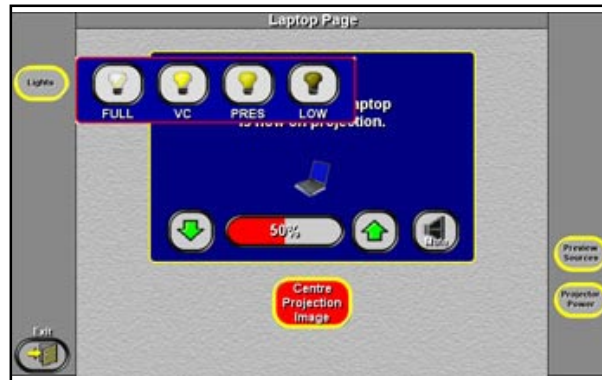
The “Mute” button will silence presentation sound, a red “Muted” indication reminds you that sound is off. To turn sound on again simply touch the “Mute” button again.

**Lighting.**

**PREVIEW:**

Selected on the right sidebar of the main(single) control screen above, any source can be shown privately on the left hand monitor of the desk. When in dual screen this function is not available.

## LIGHTING:



Control of four lighting scenes is available from the AMX touchpanel. When the “Lights” button on the top left of the panel is selected, a pop-up bar is overlaid on any screen in use and a light level may be selected. This pop-up disappears after 20 seconds

The recommended settings are:

- **Full** No presentation material in use.
- **VC** Videoconference Presentations and Question and Answer Sessions
- **PRES** Local Presentations
- **LOW** Local Presentations

Control is also available from a manual scene setting control panel located on the trunking behind the desk.

## MICROPHONES:

In Local Presentaion mode the room microphones only feed the local induction loop to support room users with a hearing aid.

## Closedown and Switch OFF

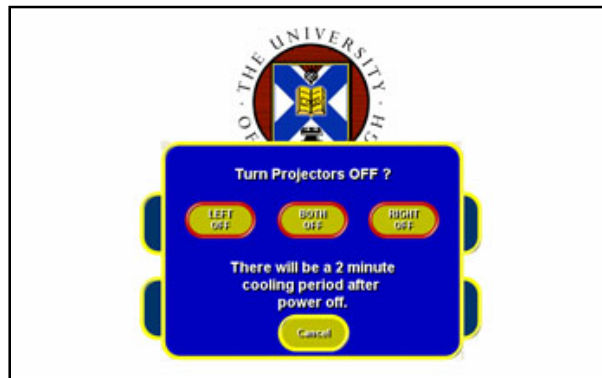
**To extend the life of the data projector bulbs it is essential that the projectors are turned OFF on completion of your session using the following procedure:**

Repeatedly press the “Exit” button on the AMX panel until you return to the welcome screen.



OR

If you have been using dual projection (or videoconferencing with two projectors in use) you will be presented with the following pop-up menu.



**You get this pop up if two projectors are in use NOT the one shown above**

To shut down the data projectors select the “**Yes**” or “**Both Off**” buttons on the Projector Power pop up menus. This will start the projector cool down period. Select ‘Cancel’ if you are continuing to use the room in another mode.

If the pop up menu disappears simply select and exit “**Local Presentation**” and the Projector Power pop up menu will reappear.

You may then turn OFF the “**System Power**” switch on the presentation desk.

# **VIDEO SOUTH** **MEDICAL TELEVISION**

*5 Kingsmead Square, Bath BA1 2AB*

*tel. 01225 461985*

*video. 01225 331314*

*email [info@videosouth.co.uk](mailto:info@videosouth.co.uk)*

*[www.videosouth.co.uk](http://www.videosouth.co.uk)*